



Liquidity VLS

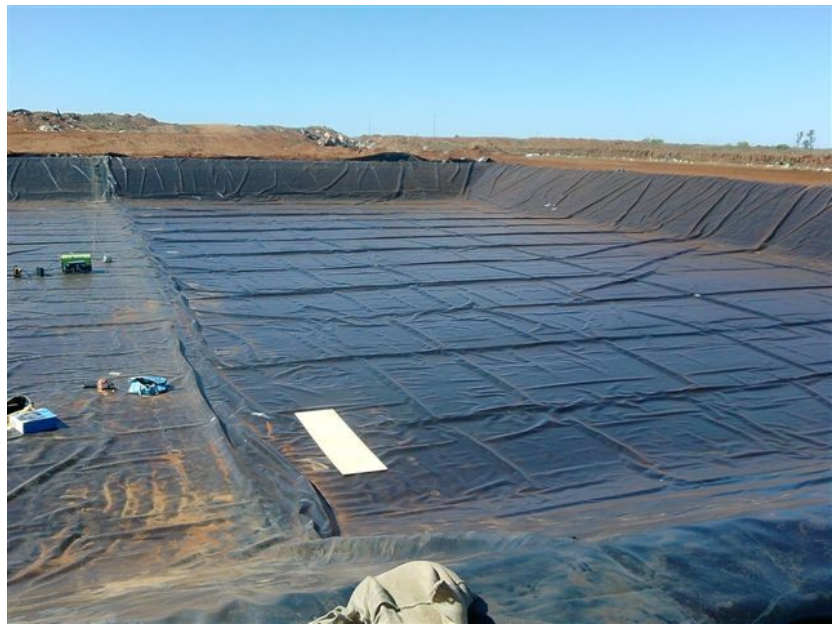
Custom Lining & Enclosed Bladder Solutions

Liquidity VLS® Dam Liners by Waterplex®

The Enviro Liner® 6000 series membrane manufactured by Layfield is a premium quality geomembrane material designed for top performance in many geomembrane applications.

The Enviro Liner® 6000 formulation is a proprietary polyolefin material, designed for outstanding durability, chemical resistance, and flexibility. The Enviro Liner® 6000 series is manufactured by Layfield in North America.

Every step in the production of an Enviro Liner® 6000 geomembrane is completed according to their registered quality management system, ensuring your liner adheres to stringent standards for geomembrane applications.



The Enviro Liner® 6000 series is ideal for applications such as water and waste water, secondary containment, soil remediation, and pond and canal liners. The Enviro Liner® 6000 formulation includes a proprietary UV inhibitor/antioxidant additive package which makes Enviro Liner® 6000 the most durable thin film geomembrane available on the market for exposed service applications. The Enviro Liner® 6000 series has been tested extensively using accelerated weathering equipment, and the black styles have been shown to provide the same exposed service life at 0.75mm as can be expected from 1.5mm HDPE. The flexibility of Enviro Liner® allows us to prefabricate large panels of liner in our Australian Factory. Often, entire ponds can be lined in one piece, reducing construction time, ensuring high seam integrity and minimising site construction and fabrication costs.

Waterplex® can supply either roll stock, fabricated geomembrane panels, or provide complete installation services.

Each liner panel produced is a custom panel. Prefabricated panels are fabricated to best match your containment area. Each panel is sized to fit, with the least waste, in a logical sequence in the containment area. In containments with irregular shapes, panels are sized and shaped to best accommodate the irregular size.

Waterplex™

A.C.N. 132 385 310 P O Box 59 Lane Cove NSW 1595
Ph: +61 2 9113 5593 Fax: +61 2 9113 5597





Custom Lining & Enclosed Bladder Solutions

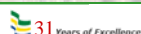
There are no theoretical limits to the size of the liner panels that we can prefabricate but there are some practical limits, notably panel weight. Panel weight is important because of the limits of handling equipment that may be available in the field.

Enviro Liner® is normally limited to a maximum panel weight of approx 1,200 kg. However a panel weight of 600kg is more desirable. If a skilled installation crew is available, then larger panels can be fabricated. Panels are accordion folded in one direction and then rolled in the other direction.

26 Jan 2006		Enviro Liner® 6000 Minimum Properties			
Style	ASTM	Enviro Liner® 6020	Enviro Liner® 6030	Enviro Liner® 6040	
Thickness (Nominal)	D5199	20 mil 0.5 mm	30 mil 0.75 mm	40 mil 1.0 mm	
Tensile Strength at Break	D638	77 ppi 13.5 N/mm	115 ppi 20.1 N/mm	152 ppi 26 N/mm	
Elongation	D638	800%	800%	800%	
Tear Resistance	D1004	11 lbs 49 N	16 lbs 71 N	22 lbs 98 N	
Low Temperature Impact Resistance	D1790	-94°F -70°C	-94°F -70°C	-94°F -70°C	
Dimensional Stability	D1204 Max Chng	1.5%	1.5%	1.5%	
Puncture Resistance	D4833	32 lbs 142 N	48 lbs 213 N	61 lbs 271 N	
UV Resistance % Tensile Retained after 20,000 hours (Black Styles Only)	G154		90.5%		

Enviro Liner® Geomembranes

- Enviro Liner 6000 Key Properties
- Outstanding UV resistance
 - 20-year warranty available
 - 30-year equivalent accelerated testing completed
- NSF 61 Listed for Potable Water
- Fish Safety Tested
- AU/NZ 4020 Potable Water tested (Australia)



Waterplex™
 A.C.N. 132 385 310 P O Box 59 Lane Cove NSW 1595
 Ph: +61 2 9113 5593 Fax: +61 2 9113 5597

